



DIGI SWAP[®]

Save the film camera

Adapter installation process

This product is patented in Japan and is filed for the Patent Cooperation Treaty (PCT)



FIREWORKS LTD
1950
Vintage

1950vintage.com



DIGI SWAP®
Save the film camera

With this groundbreaking Adapter & App Please enjoy yourself more.

This product is patented in Japan and is filed for the Patent Cooperation Treaty (PCT)

FIREWORKS LTD
1950
Vintage

1950vintage.com

copyright © 2021 FIRE WORKS K.K. all rights reserved



DIGI SWAP®
Save the film camera

Adapter features

- 1. This adapter is installed by removing the back cover of the film camera.**
- 2. This adapter requires a dedicated application.**
- 3. This adapter is for film cameras only, but depending on the camera model You may not be able to install it. (See page 8 for details.)**



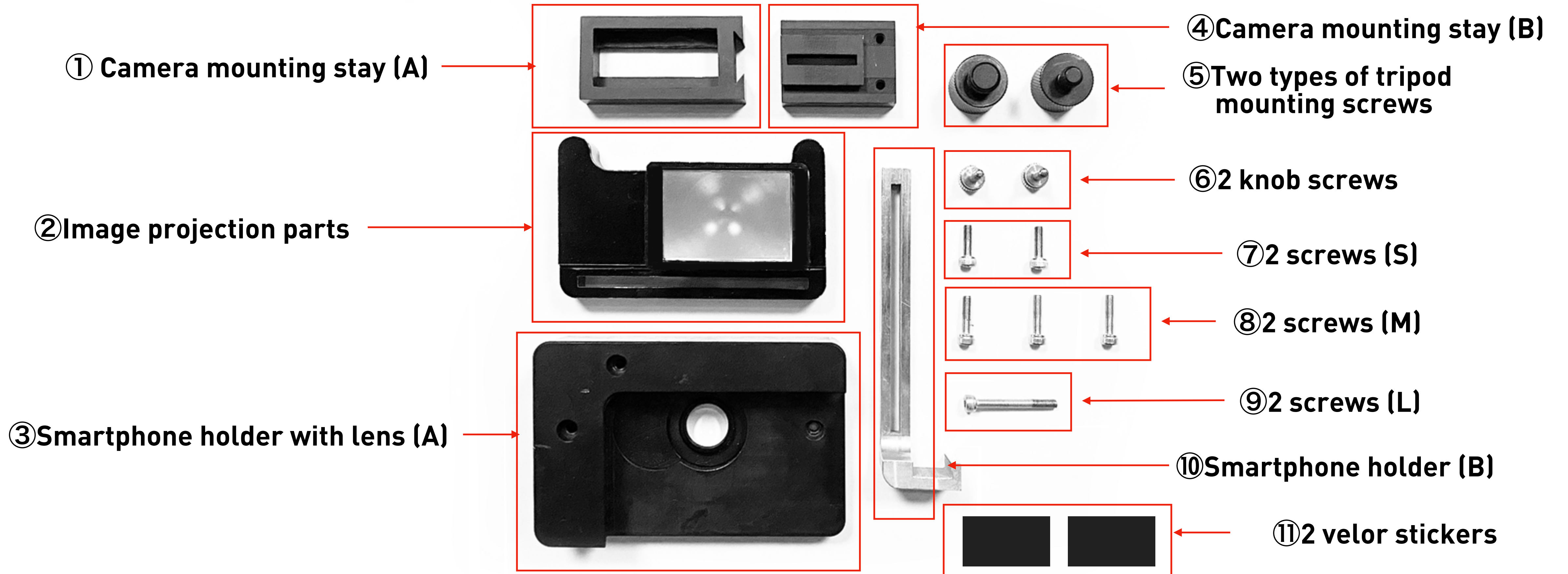
1950vintage.com



DIGI SWAP[®]
Save the film camera

FIREWORKS LTD
1950
Vintage
1950vintage.com

Standard set contents





DIGI SWAP®
Save the film camera

FIREWORKS LTD
1950
Vintage
1950vintage.com

Adapter installation

Please prepare a film camera with a back cover that can be removed.

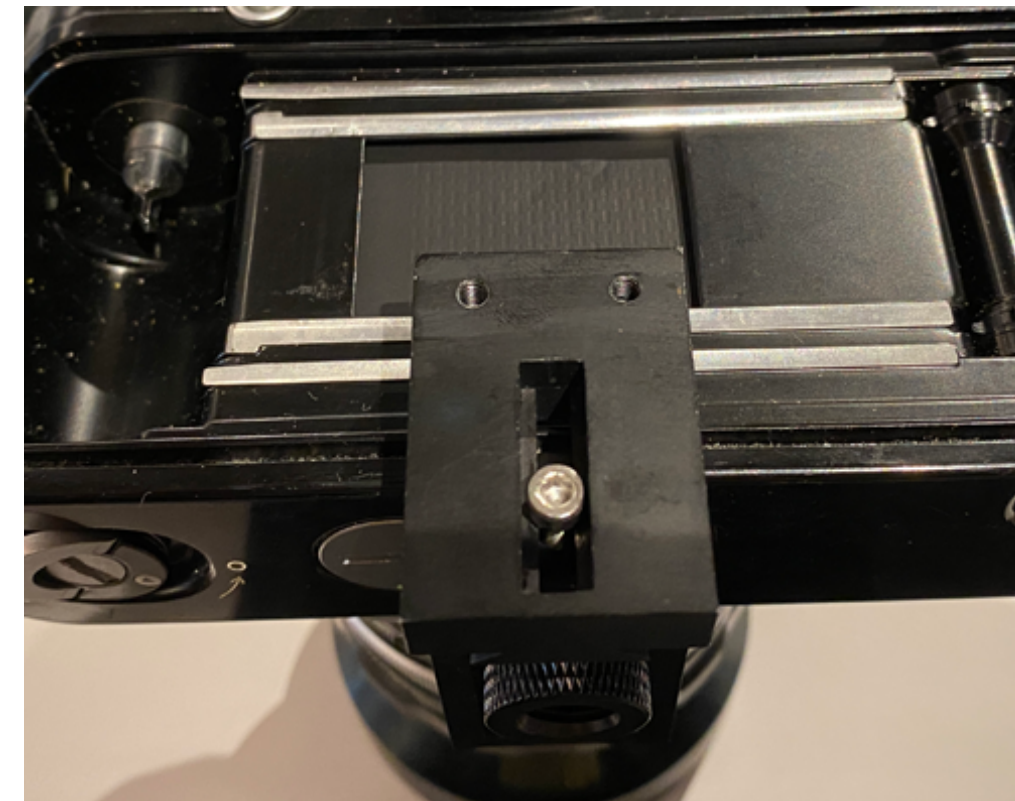


Remove the back cover.

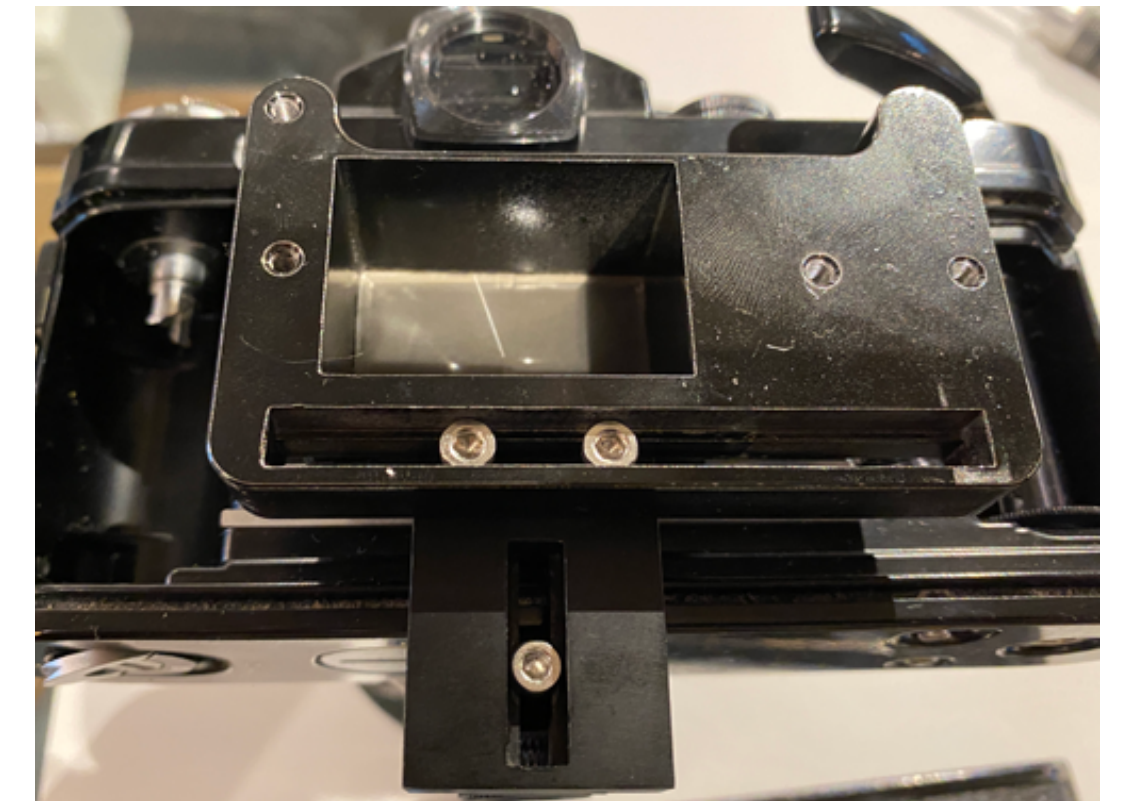
④ Camera mounting stay (B)
Lightly attach it with the tripod mounting screw of ⑤.



① Camera mounting stay (A)
④ On the camera mounting stay (B)
Lightly attach with one screw (M) of ⑧.



Take the image projection part of ②
with the camera of ①
Lightly attach to the attachment stay (A).



Depending on the model, the location of the screw holes on the tripod will differ, and the mounting position will change.
If there is a tripod mounting hole near the end, you may not be able to mount it.

The position of ② is in the center of the shutter
All screws while holding down
Tighten and fix.



Note: Be careful not to touch the shutter when working.
Please do the installation work at your own risk.

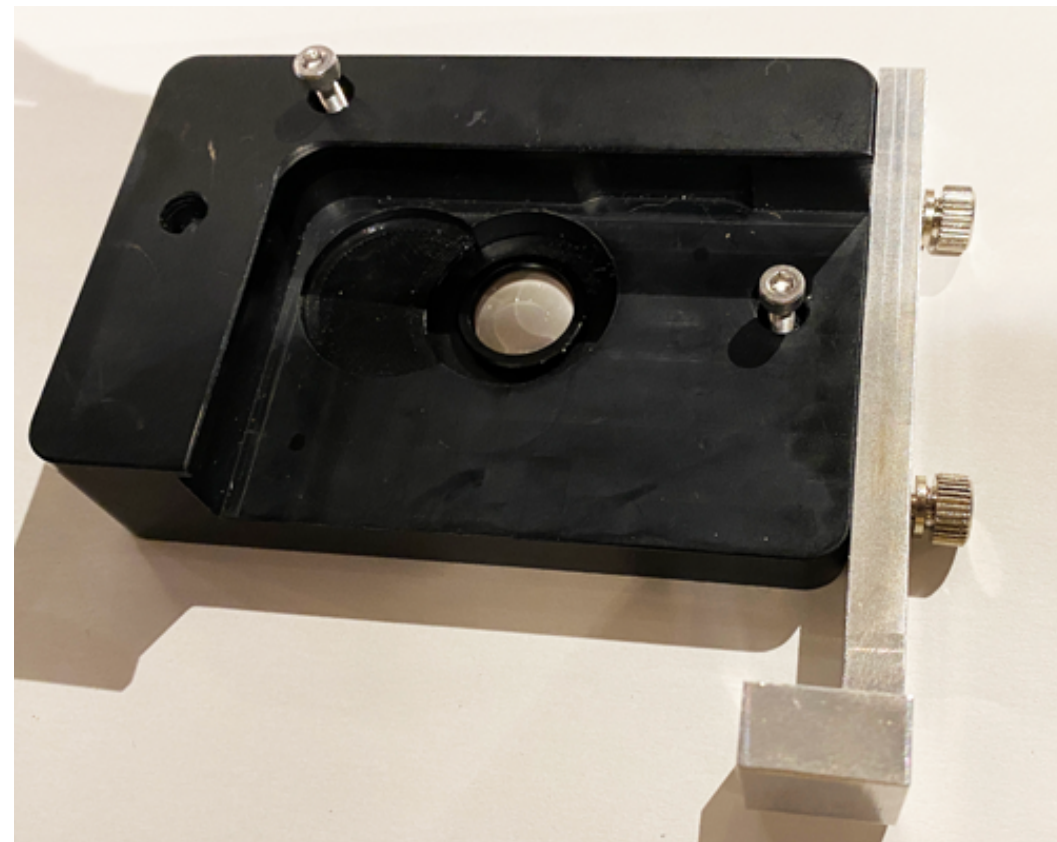


DIGI SWAP[®]
Save the film camera

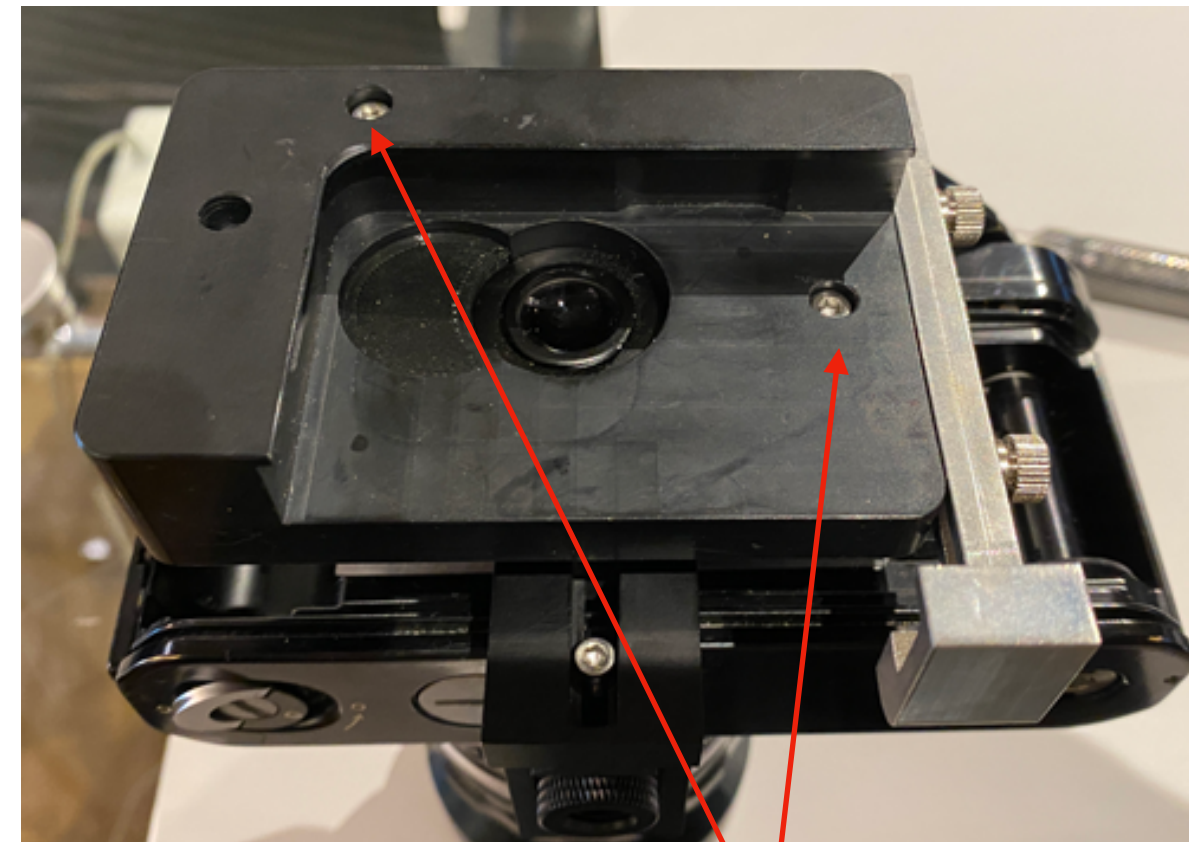
FIREWORKS LTD
1950
Vintage
1950vintage.com

Adapter installation

③ With a smartphone holder (A) with a lens
Lightly attach the smartphone holder (B) of ⑩
with the knob screw of ⑥.



Assembled earlier on the image projection part of ②
Install the smartphone holder (A) + (B).



The mounting screw holes vary depending on the
smartphone model.

Like sandwiching a smartphone in a smartphone holder
Attach it and tighten the knob screw of ⑥ firmly.



If the knob screw of ⑥ is loosely tightened,
the smartphone will come off.
It may fall. Please be careful.



**Note: Be careful not to touch the shutter when working.
Please do the installation work at your own risk.**



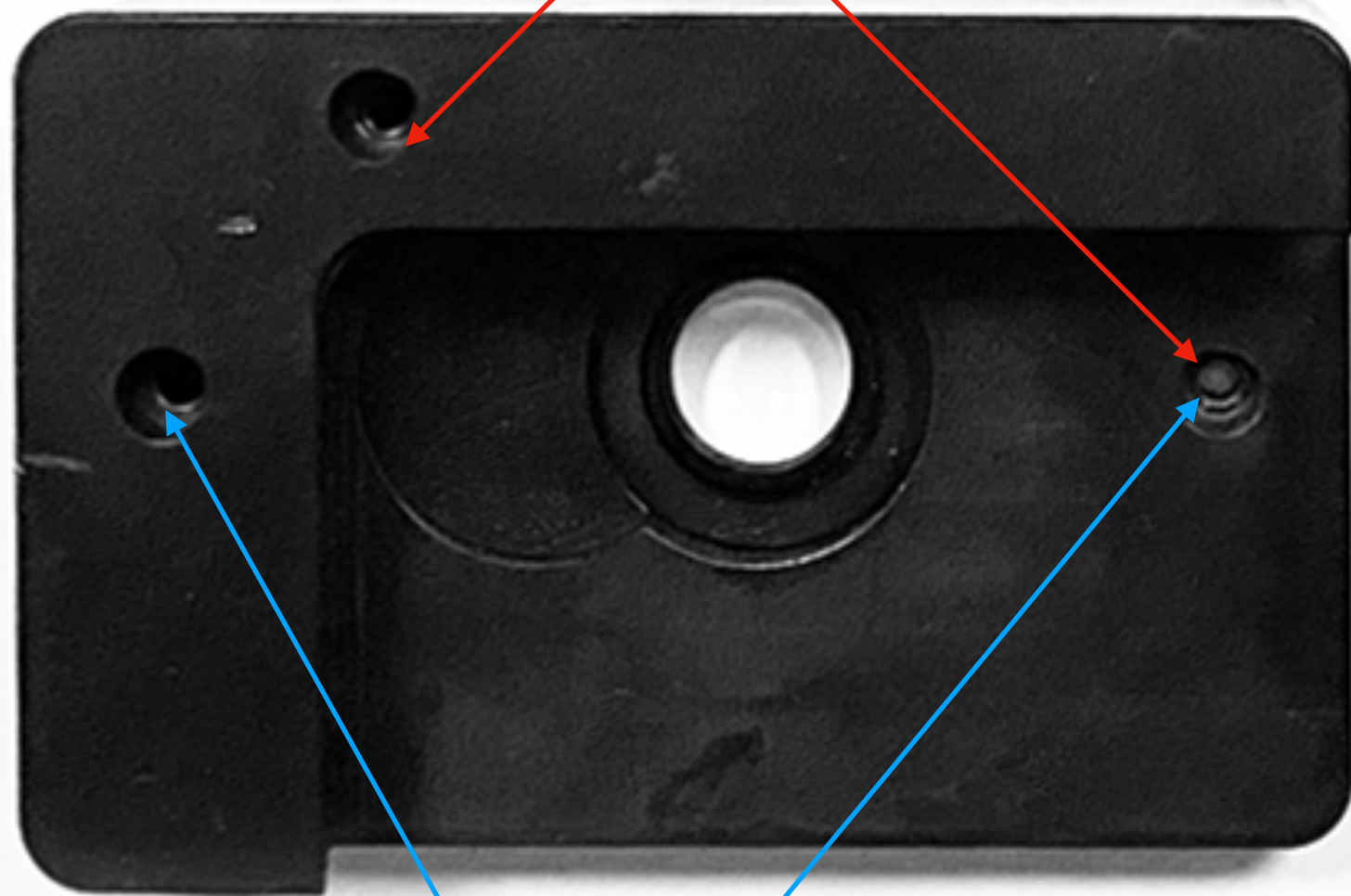
DIGI SWAP®
Save the film camera

FIREWORKS LTD
1950
Vintage
1950vintage.com

③ Smartphone holder with lens (A)

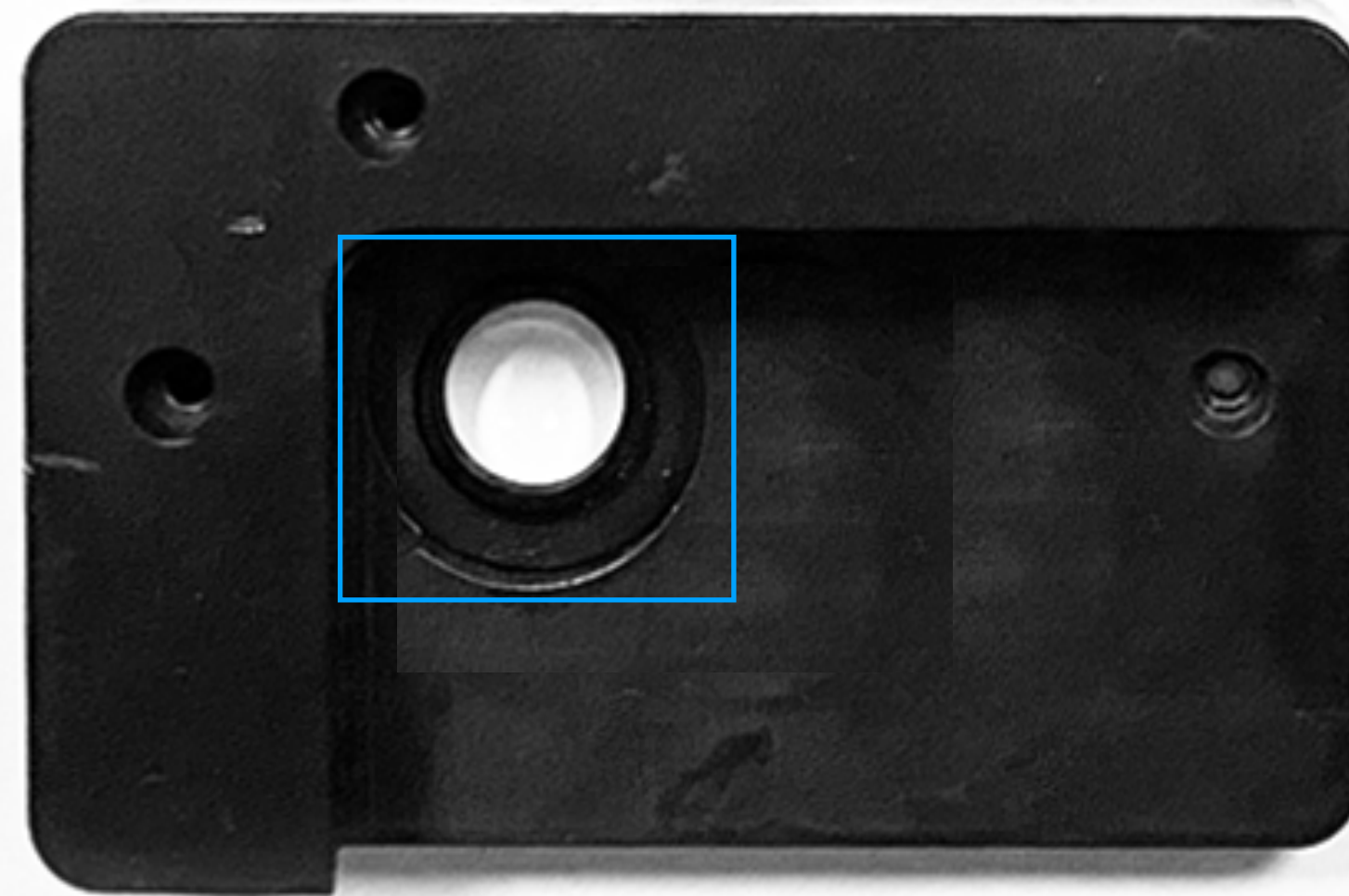
(Relationship between mounting hole and lens position depending on iPhone model)

iPhone 12, 12mini, 12proMAX, 13pro, 13pro MAX, 14pro, 14proMAX, 15pro, 15proMAX use the screw holes indicated by the red arrows.

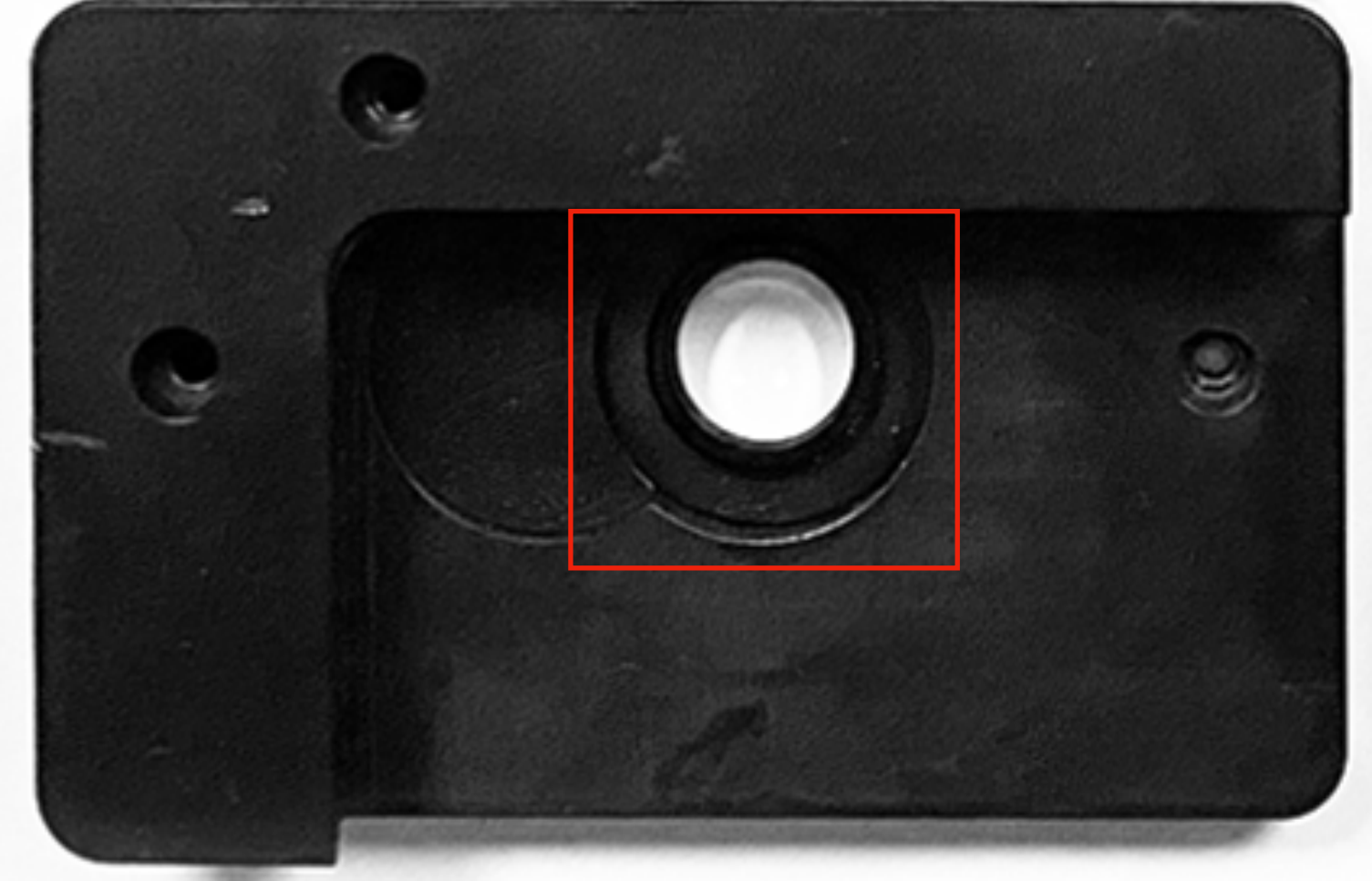


For iPhone X, XS, XS-MAX, SE(2nd) XR, 11, 11pro, 11pro-MAX, 12pro, 13, 13mini, 14, 14plus, 15, 15 plus, Use the screw holes indicated by the blue arrows.

For iPhone X, XS, XS-MAX, SE(2nd) XR, 11, 11pro, 11pro-MAX, 12pro, 13, 13mini, 14, 14plus, 15, 15plus the lens is on the left.



The lens for iPhone 12, 12mini, 12proMAX, 13pro, 13pro MAX, 14pro, 14proMAX, 15pro, 15proMAX is on the right.



Note: Be careful not to touch the shutter when working. Please do the installation work at your own risk.



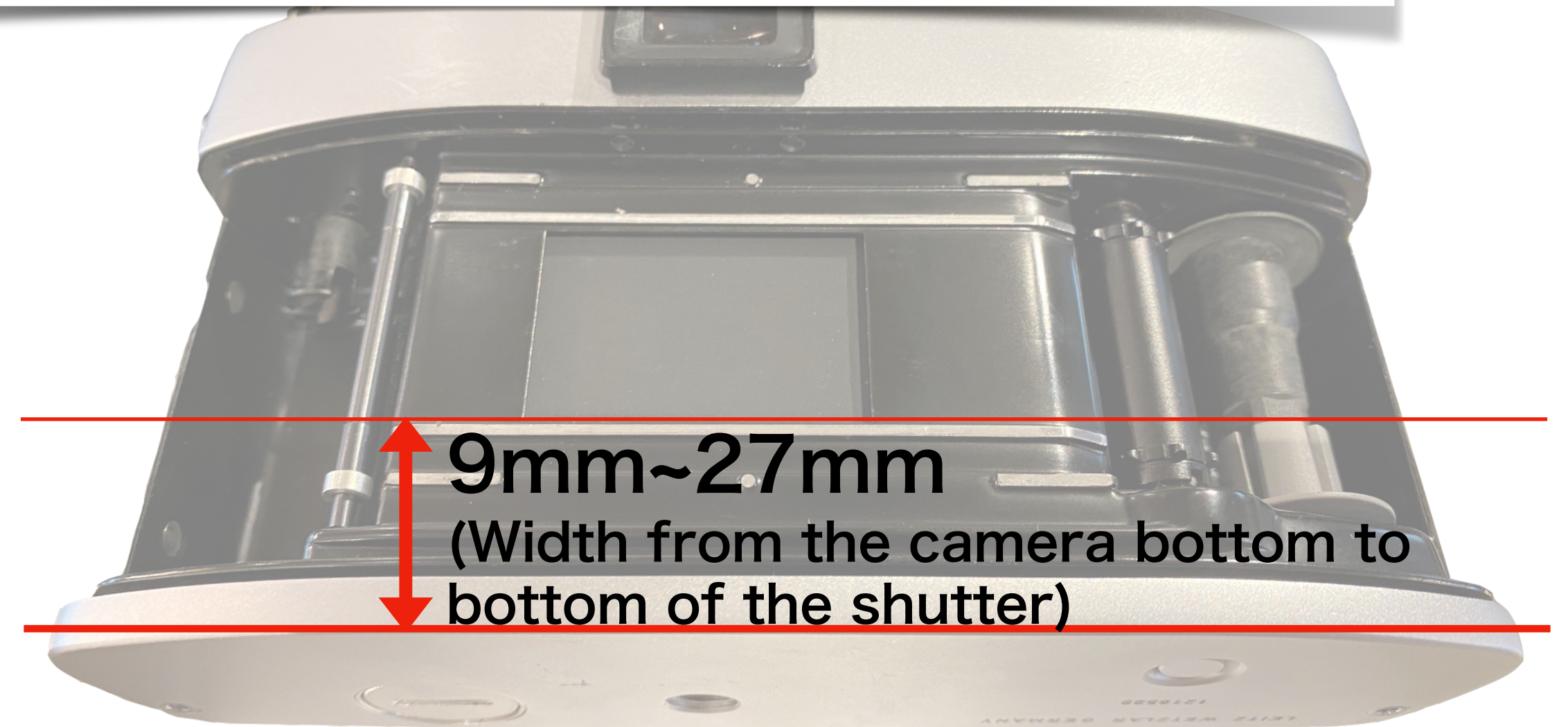
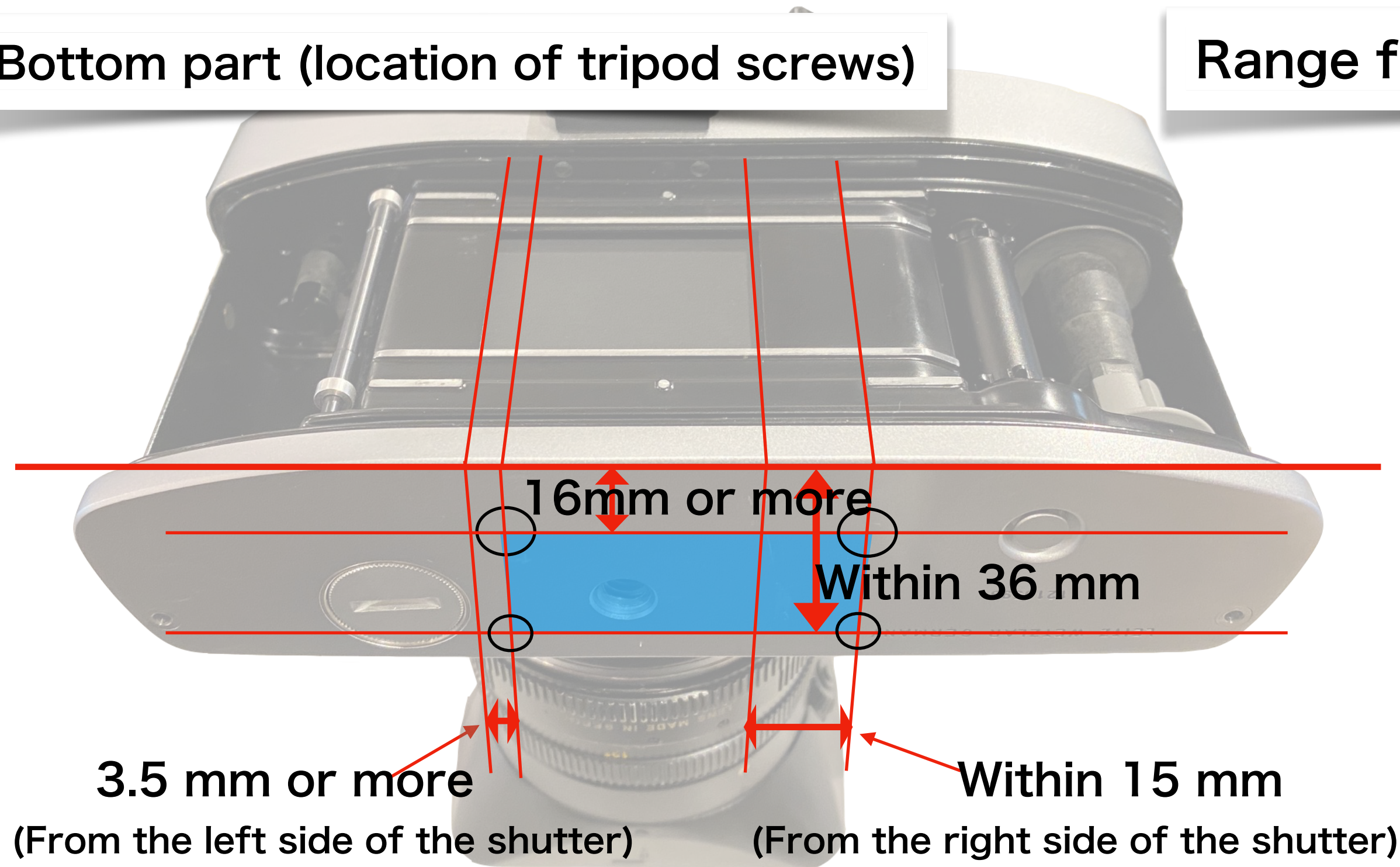
DIGI SWAP[®]
Save the film camera

FIREWORKS LTD
1950
Vintage
1950vintage.com

Adapter mountable range (models that can be mounted)

Bottom part (location of tripod screws)

Range from the camera bottom to under the shutter



It can be installed if the center of the screw hole of the tripod is inside the **blue frame**.

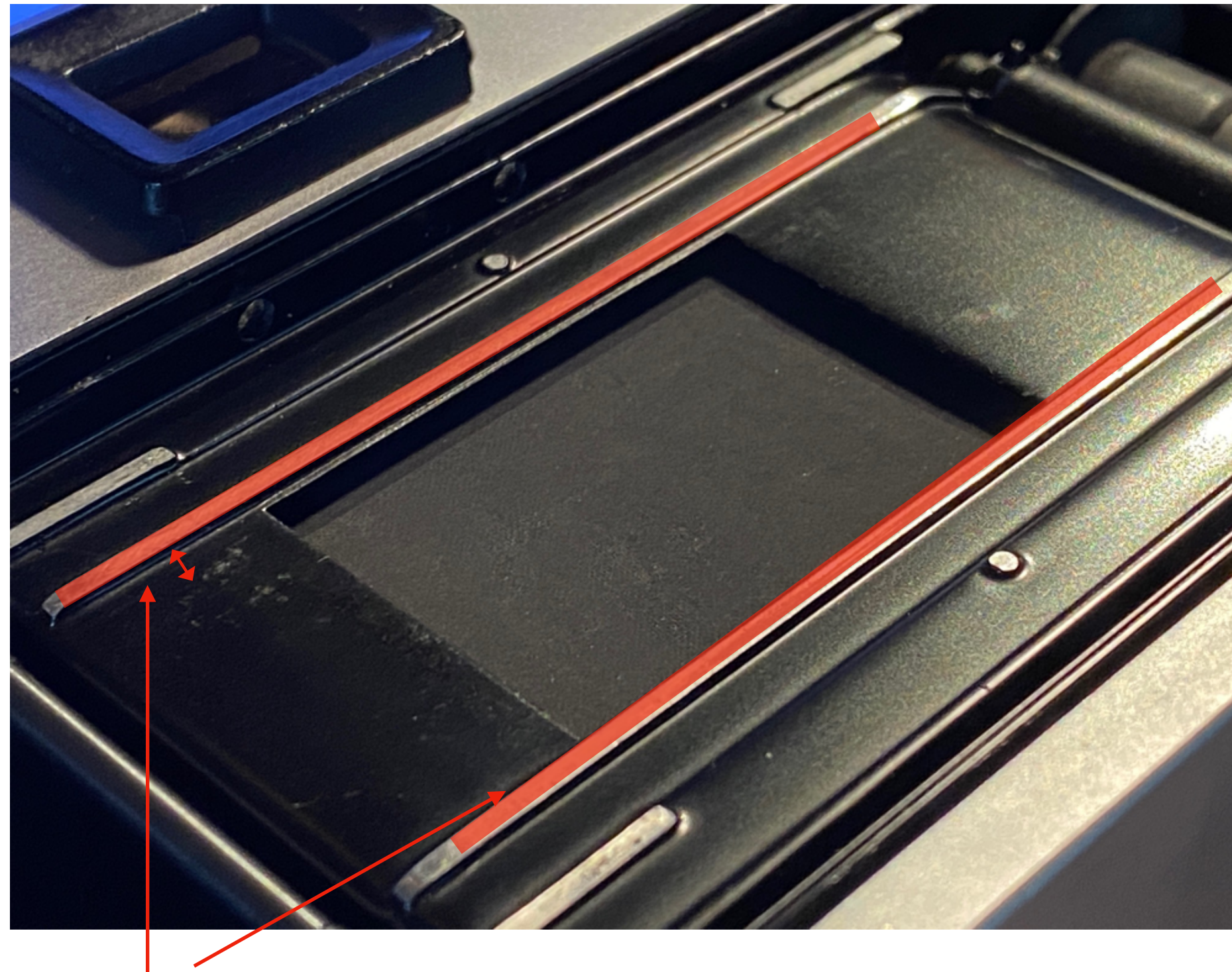


Note: Be careful not to touch the shutter when working. Please do the installation work at your own risk.



DIGI SWAP®
Save the film camera

Installation confirmation points

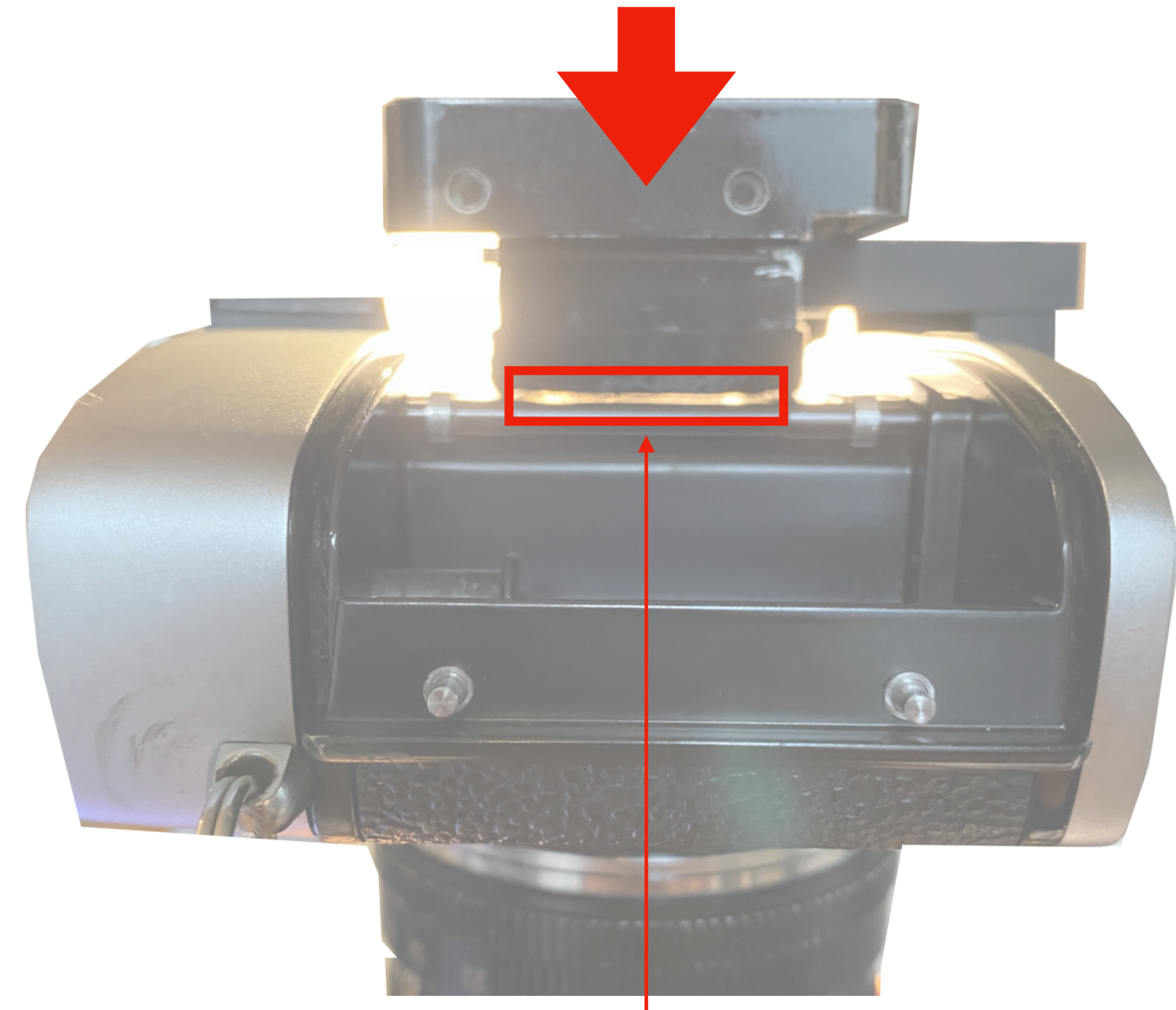


Some cameras have high film rails.



**Note: Be careful not to touch the shutter when working.
Please do the installation work at your own risk.**

Please attach while pressing **lightly** so that there is no gap. If there is a gap, please refer to page ⑩.



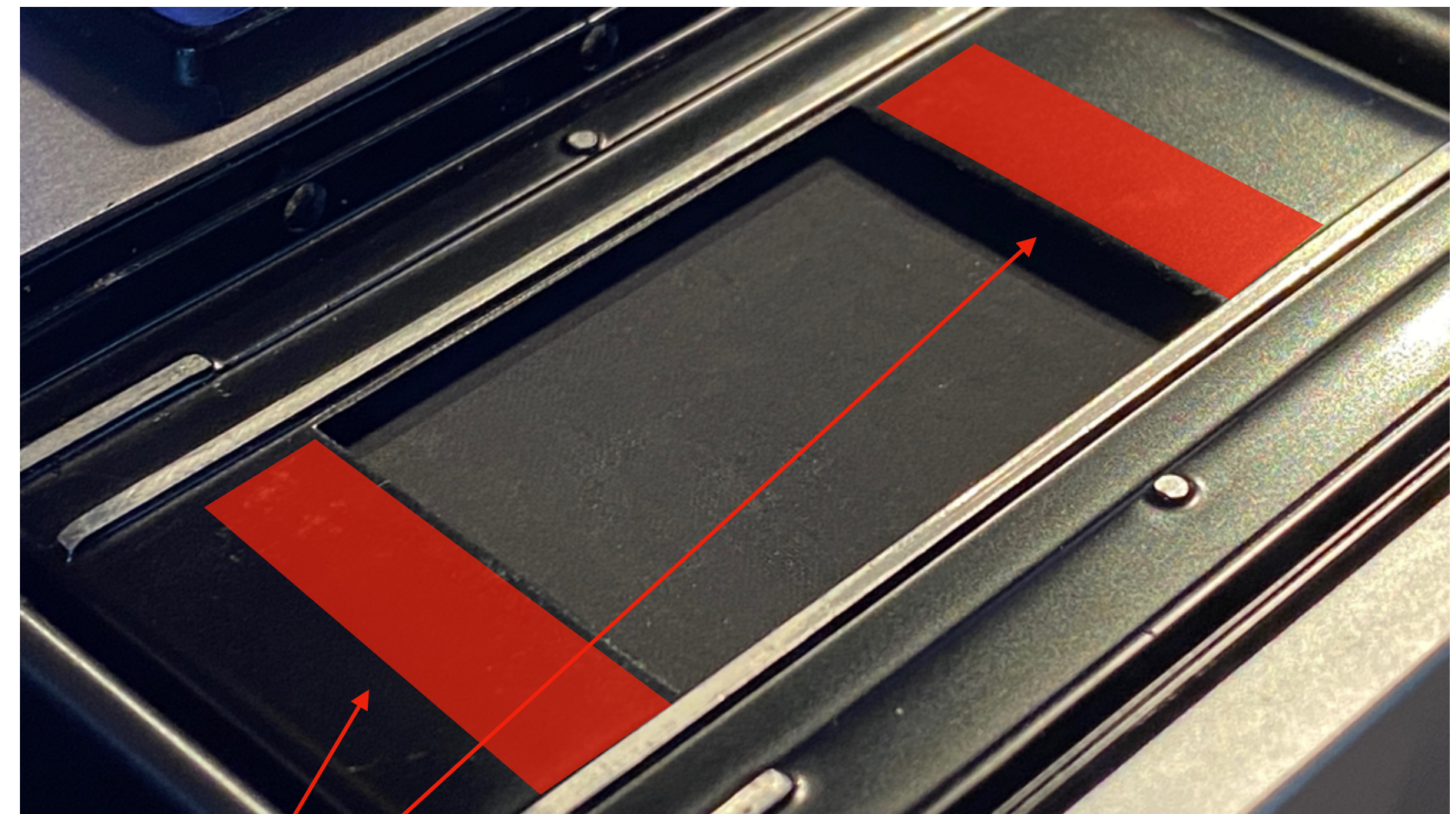
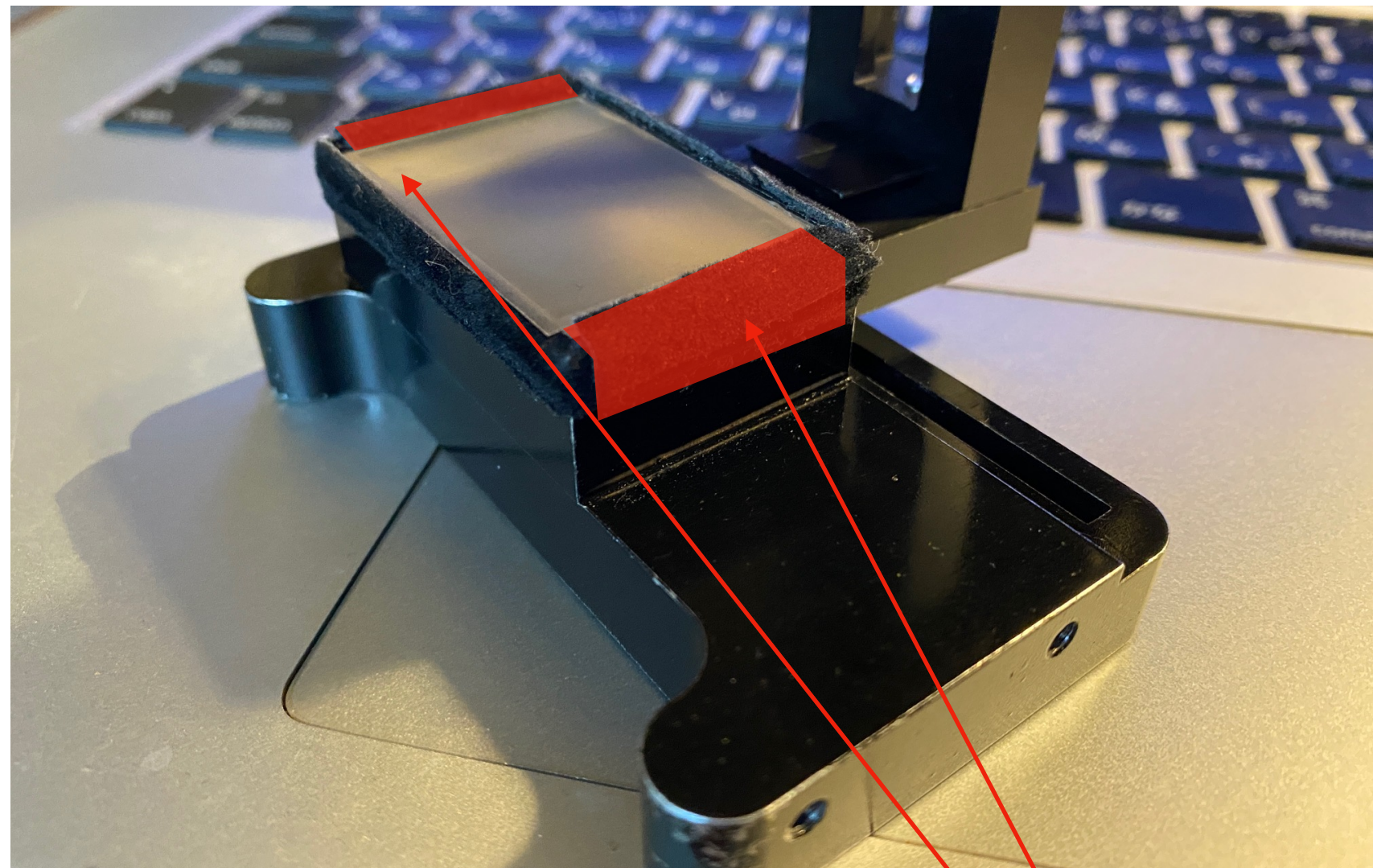
In that case, the image projection part of ② floats.
(If you check from the side, you can see that it is floating)



DIGI SWAP[®]
Save the film camera

FIREWORKS LTD
1950
Vintage
1950vintage.com

Installation confirmation points



Stick the attached velor sticker on the **red part**, or put it on the **red part** on the left and right of the shutter.



**Note: Be careful not to touch the shutter when working.
Please do the installation work at your own risk.**



DIGI SWAP[®]
Save the film camera

FIREWORKS LTD
1950
Vintage
1950vintage.com

Installation completed photo





DIGI SWAP®

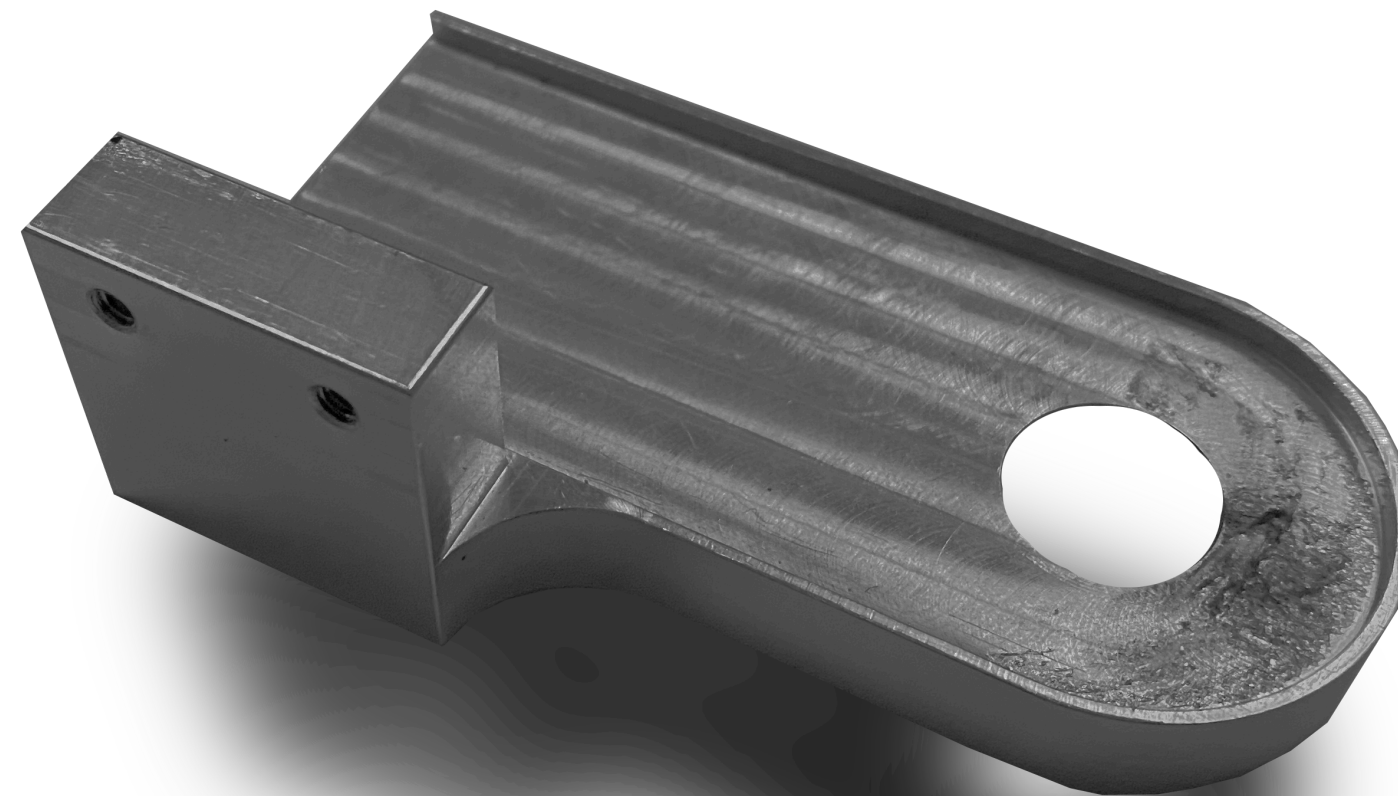
Save the film camera



LEICA M Adapter

An adapter for LEICA M is available as an option.

It can be attached to LEICA cameras such as M2, M3, etc.



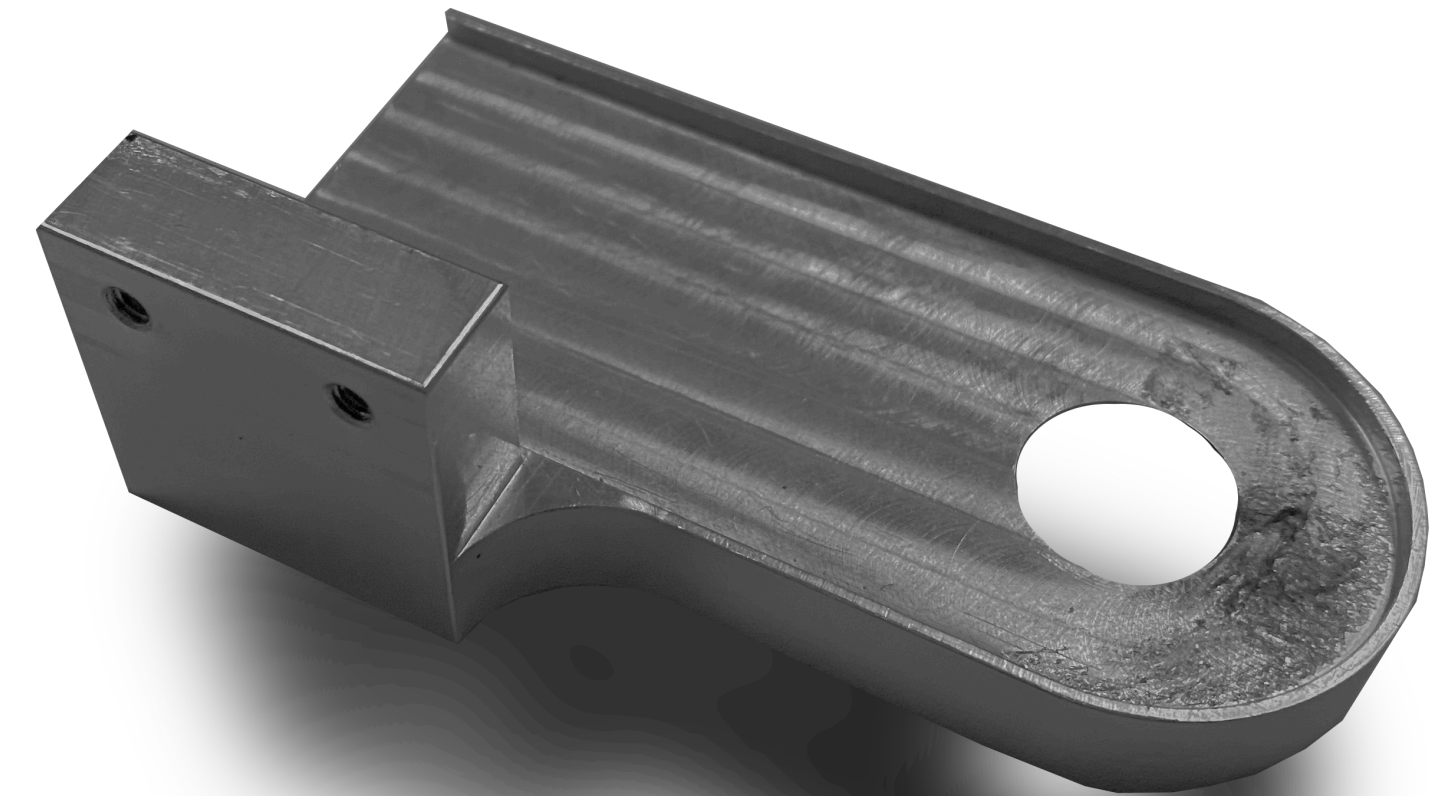
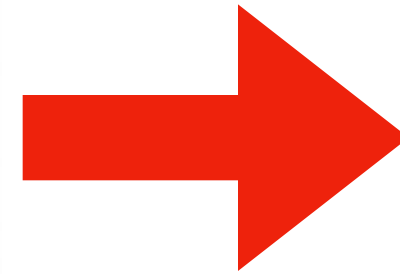
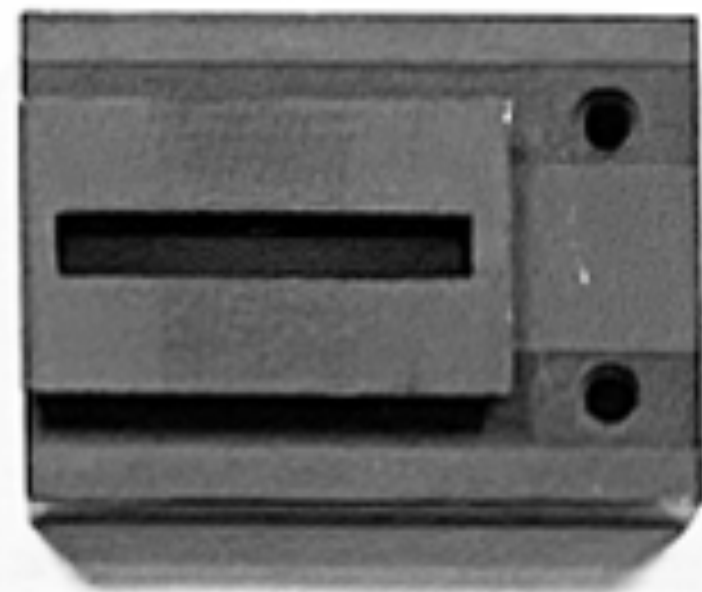
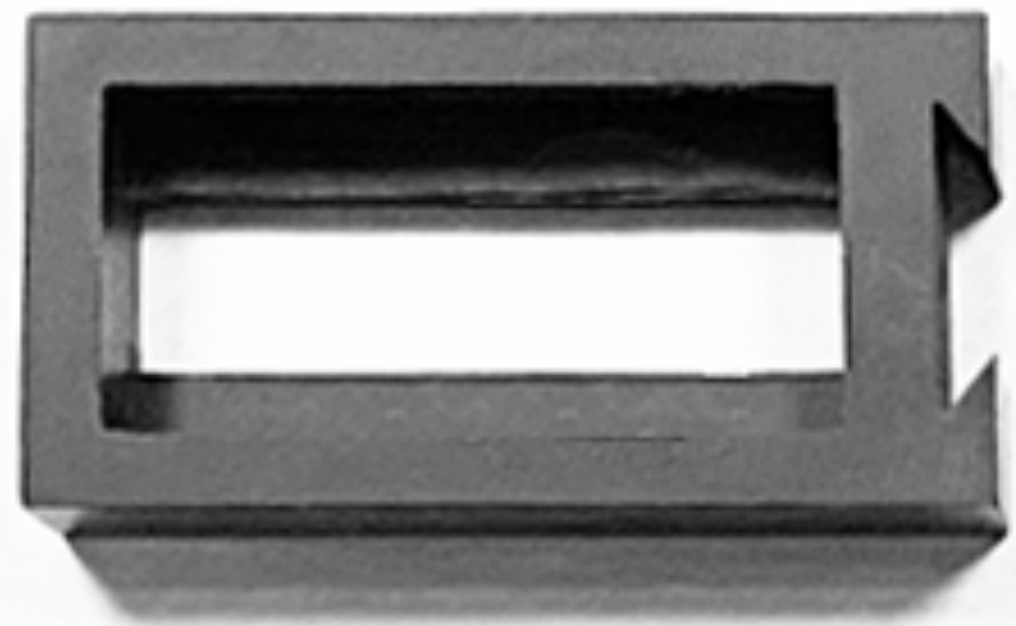


DIGI SWAP[®]
Save the film camera

FIREWORKS LTD
1950
Vintage
1950vintage.com

LEICA M Adapter

**If you change the camera mounting stays (A) and (B) to options
It can be attached to LEICA cameras such as M2, M3, etc.**





DIGI SWAP[®]

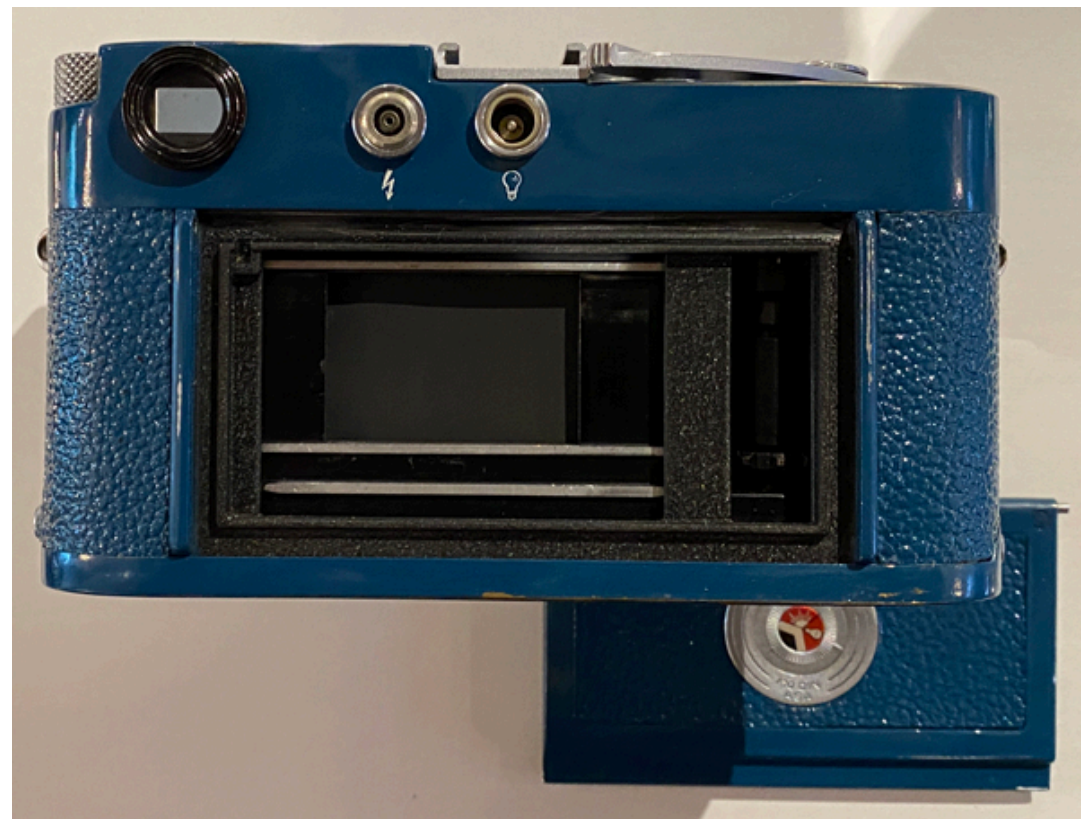
Save the film camera



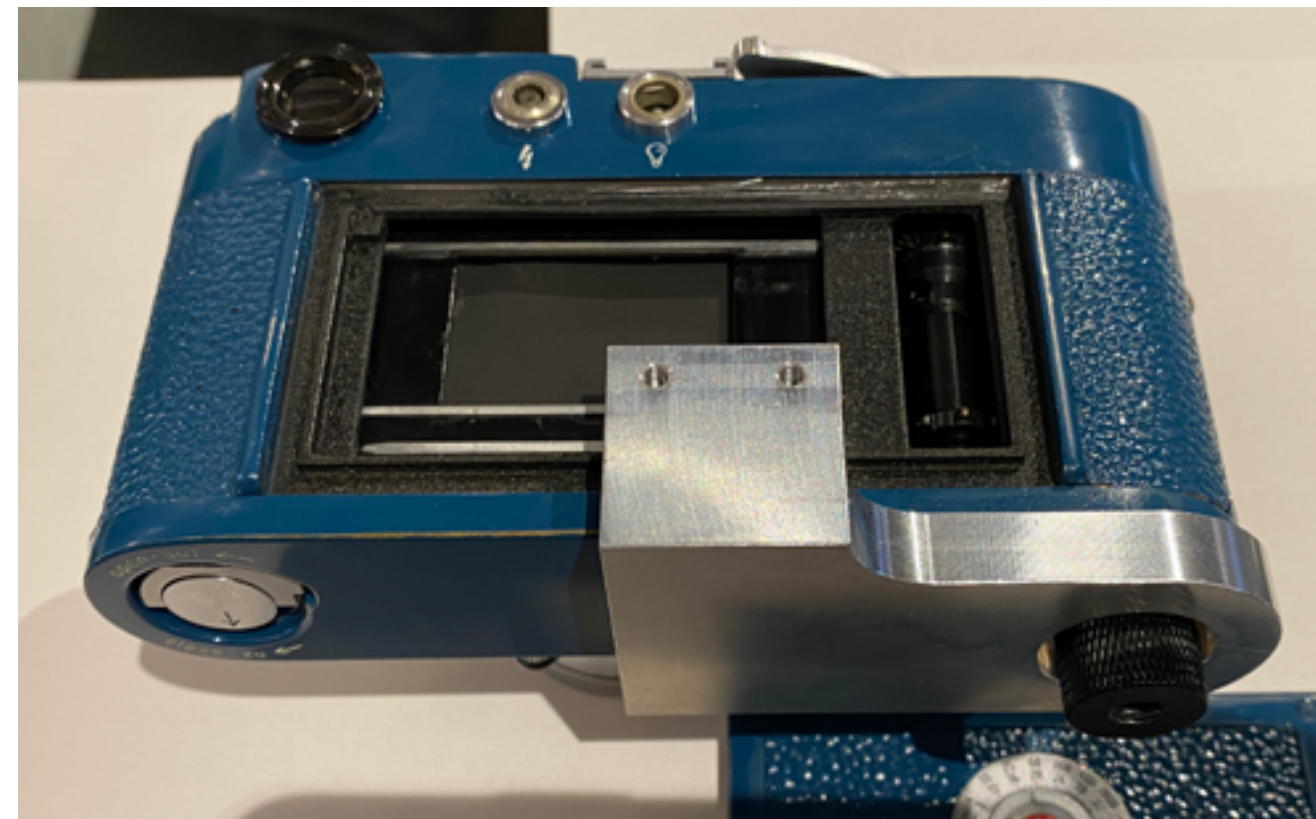
LEICA M Adapter

Mounting method

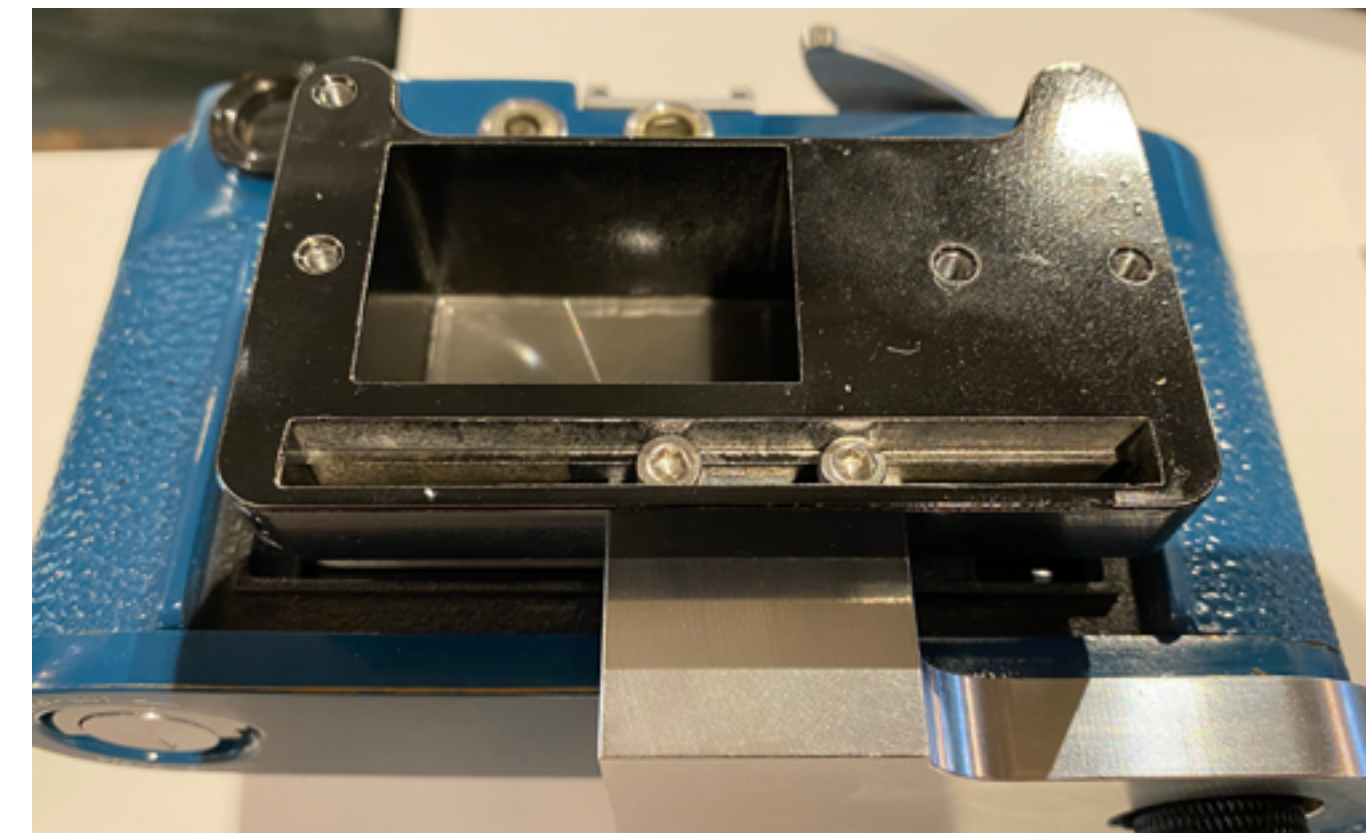
Remove the back cover.



LEICA M adapter ⑤ tripod mounting screw
Install with.



② Image projection parts to LEICA M adapter
Install it.



Tighten the screws while pressing so that the position of the part (2) is in the center of the shutter.



**Note: Be careful not to touch the shutter when working.
Please do the installation work at your own risk.**



DIGI SWAP®

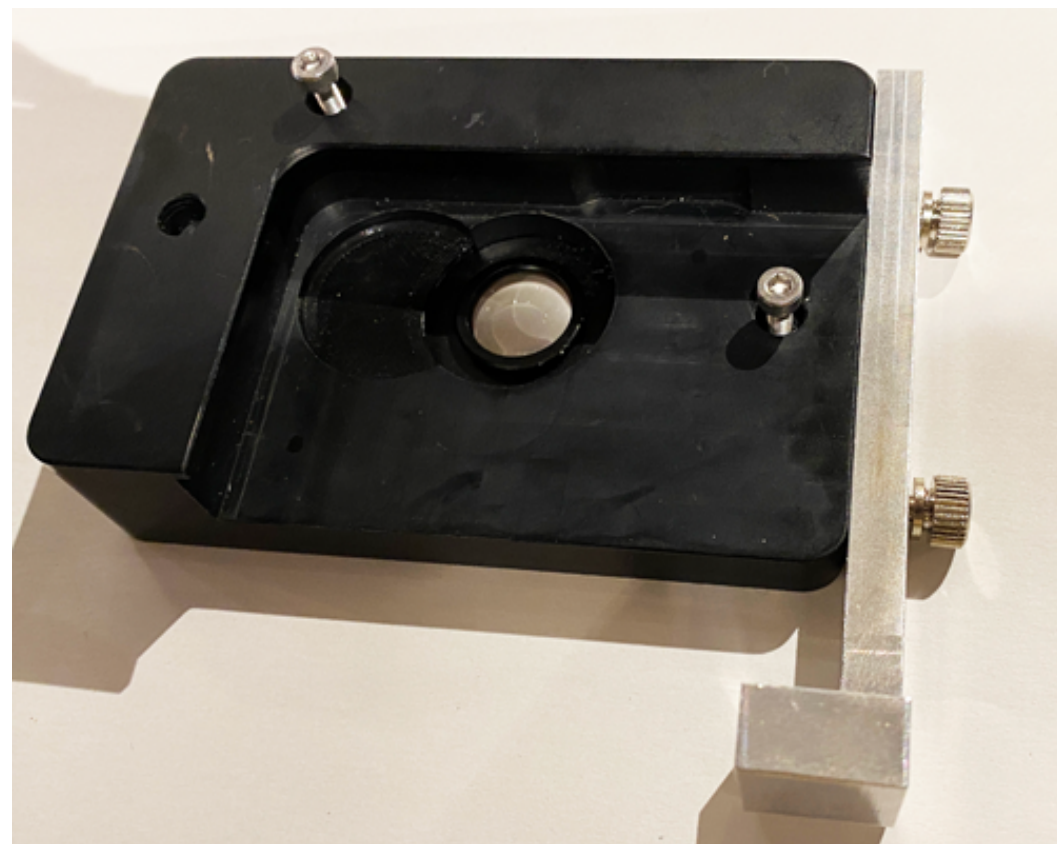
Save the film camera

LEICA M Adapter

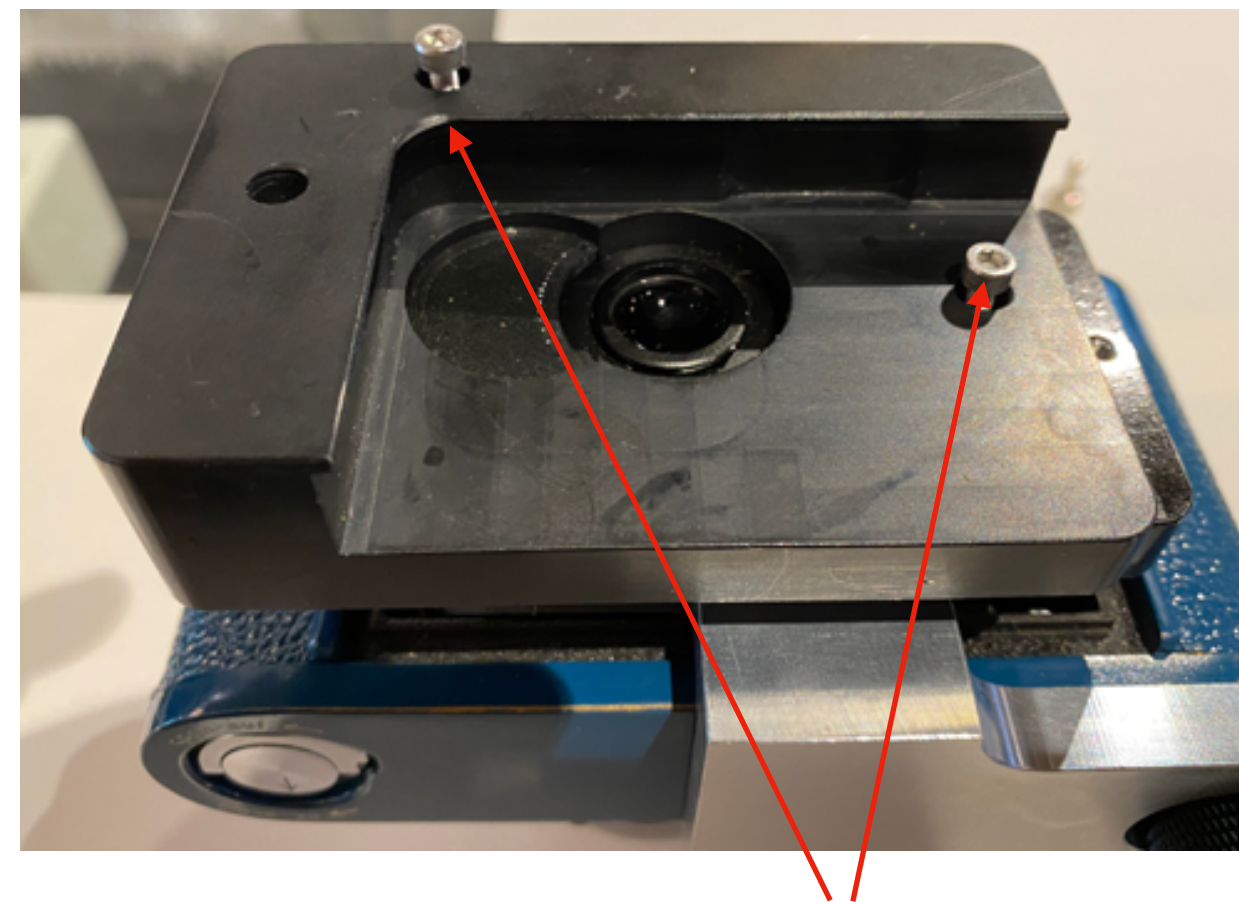
Mounting method

FIREWORKS LTD
1950
Vintage
1950vintage.com

③ With a smartphone holder (A) with a lens
Lightly attach the smartphone holder (B) of ⑩
with the knob screw of ⑥.



Assembled earlier on the image projection part of ②
Install the smartphone holder (A) + (B).



The mounting screw holes vary depending on the smartphone model.

Like sandwiching a smartphone in a smartphone holder
Attach it and tighten the knob screw of ⑥ firmly.



If the knob screw of ⑥ is loosely tightened,
the smartphone will come off.
It may fall. Please be careful.



**Note: Be careful not to touch the shutter when working.
Please do the installation work at your own risk.**



DIGI SWAP®
Save the film camera

FIREWORKS LTD
1950
Vintage
1950vintage.com

LEICA M adapter installation completed photo

